

# Portfolio



interior design & landscape design

Contact Us : +250 788 506 118 | +250 788 490 250

Email: [ladrilloltd@gmail.com](mailto:ladrilloltd@gmail.com)



# Our Clients

**betPawa**

 **ROHDE & SCHWARZ**

**IntraHealth**  
INTERNATIONAL  
Because Health Workers Save Lives.

 **ricta**

 **OLD MUTUAL**

**j; jhpiego**  
Saving lives. Improving health.  
Transforming futures.

**fhi360**  
THE SCIENCE OF IMPROVING LIVES

 **Girl Effect**

Cindi's  
**H A P E**

**cbm**  
christoffel blindenmission  
gemeinsam mehr erreichen

 **care**®

**FedEx**®  
Express

 **M PEACE Plaza**  
Come home to quality.

 **HEIFER**®  
INTERNATIONAL

 **RWANDA MILITARY HOSPITAL**

 **PLAN**  
INTERNATIONAL

 **LAND O'LAKES VENTURE 37**



# Table of Contents

CWS  
Yyussa Parking  
the Jonathan

Belpawa Shop  
R.S  
cbm

Land o Lakes  
Blue flamingo

old mutual  
care rwanda  
heifer

Fedex

fhi 360  
Cindi's hope  
ngango farmside

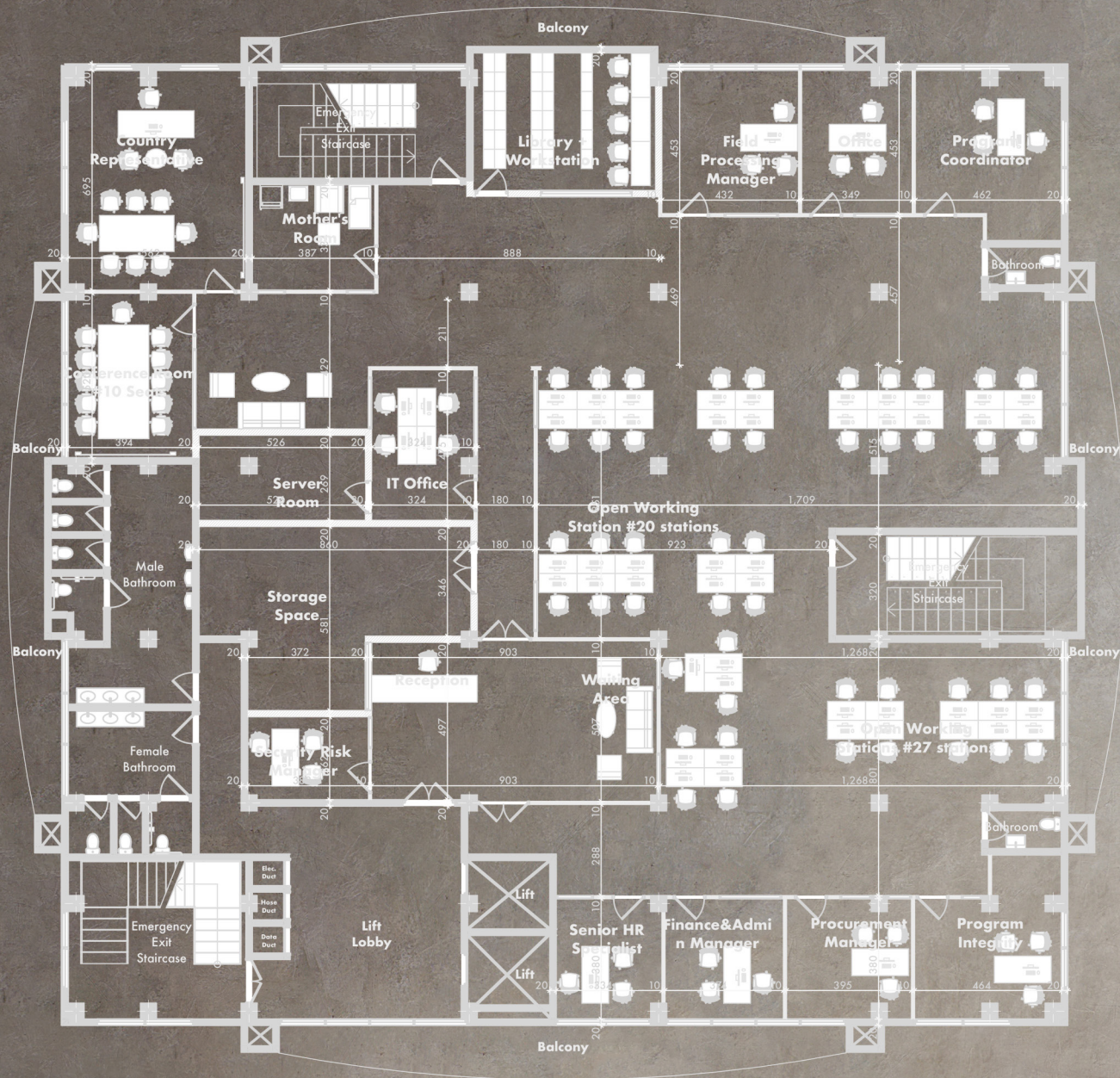


# CHURCH WORLD SERVICE

Client  
Betpawa  
Year  
2022  
Location  
M.Peace Plaza  
Status  
Built  
Category  
Office







# CWS

## INTERIOIRS

BetPawa Country Office is designed and implemented as an executive office to host country services of BetPawa in Rwanda and represent its outstanding services competences in betting industry and providing comfortable and relaxing working environment for office users.





# THE JONATHAN FOUNDATION

Client  
Betpawa  
Year  
2022  
Location  
M.Peace Plaza  
Status  
Built  
Category  
Office

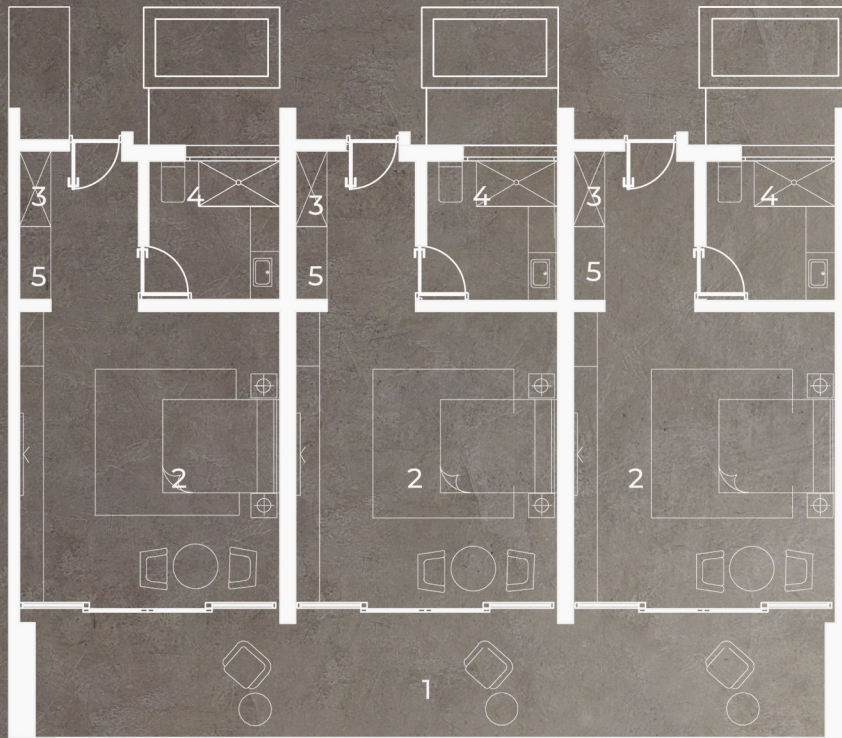




# THE JONATHAN

## VOLUNTEER COTTAGES INTERIOIRS

BetPawa Country Office is designed and implement as an executive office to host country services of BetPawa in Rwanda and represent its outstanding services competences in betting industry and providing comfortable and relaxing working environment for office users.



### LEGEND

1. Porch
2. Bedroom
3. Closet
4. Toilet
5. Kitchenette





# THE JONATHAN FOUNDATION

Client  
Betpawa  
Year  
2022  
Location  
M.Peace Plaza  
Status  
Built  
Category  
Office

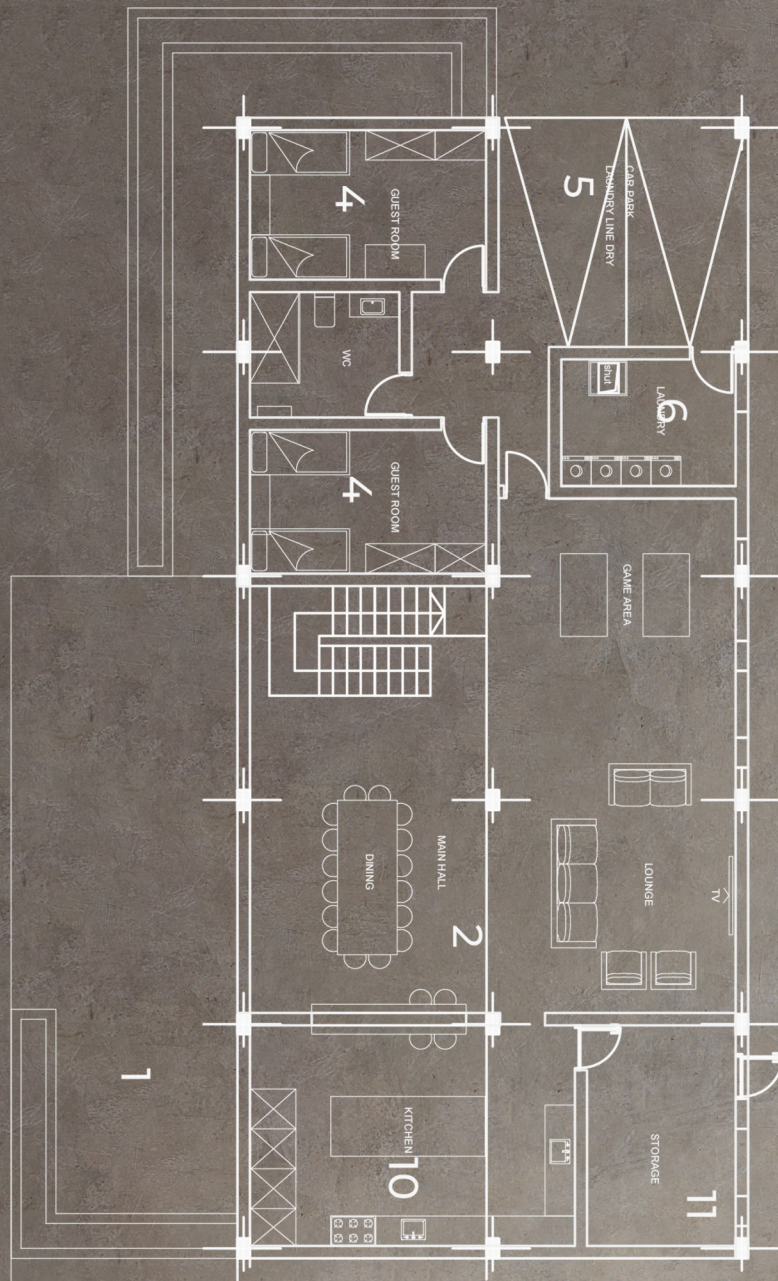




# THE JONATHAN

## VOLUNTEER PROFESSORS HOUSE INTERIOIRS

BetPawa Country Office is designed and implement as an executive office to host country services of BetPawa in Rwanda and represent its outstanding services competences in betting industry and providing comfortable and relaxing working environment for office users.



### LEGEND

1. Porch
2. Main Hall
3. Master Bedroom
4. Guest Bedroom
5. Parking
6. Laundry
7. Kids room
8. Hangout Area
9. Store
10. Kitchen
11. Store





# THE JONATHAN FOUNDATION

Client  
Betpawa  
Year  
2022  
Location  
M.Peace Plaza  
Status  
Built  
Category  
Office

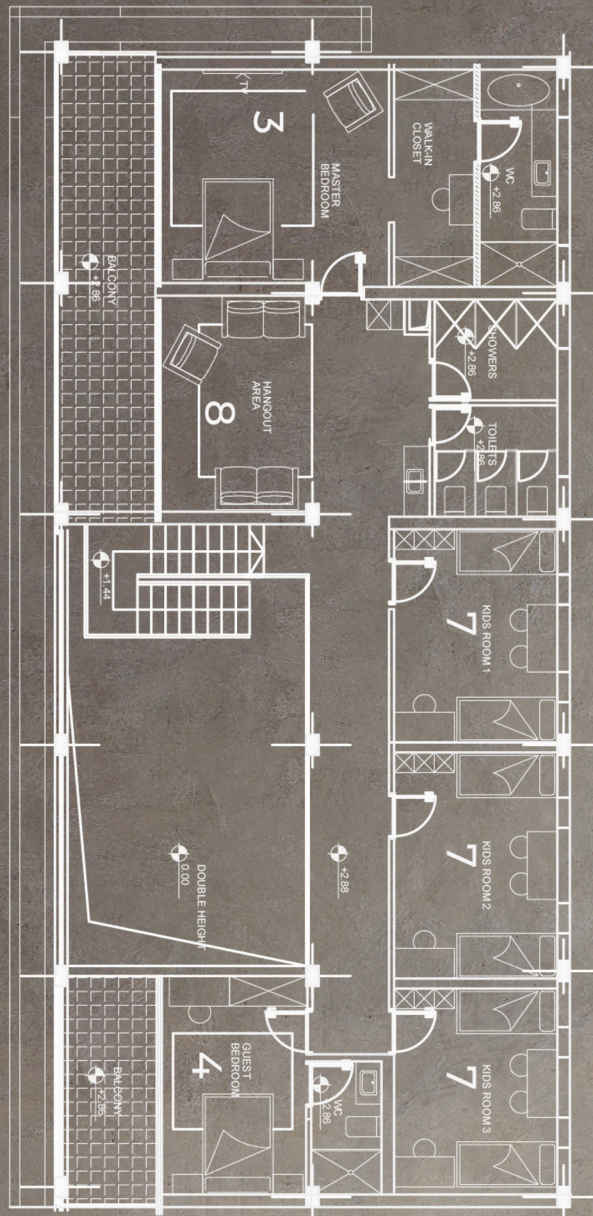




# THE JONATHAN

## VOLUNTEER PROFESSORS HOUSE INTERIOIRS

BetPawa Country Office is designed and implement as an executive office to host country services of BetPawa in Rwanda and represent its outstanding services competences in betting industry and providing comfortable and relaxing working environment for office users.



### LEGEND

1. Porch
2. Main Hall
3. Master Bedroom
4. Guest Bedroom
5. Parking
6. Laundry
7. Kids room
8. Hangout Area
9. Store
10. Kitchen
11. Store





# YYUSSA PARKING

Client  
Betpawa  
Year  
2022  
Location  
M.Peace Plaza  
Status  
Built  
Category  
Office

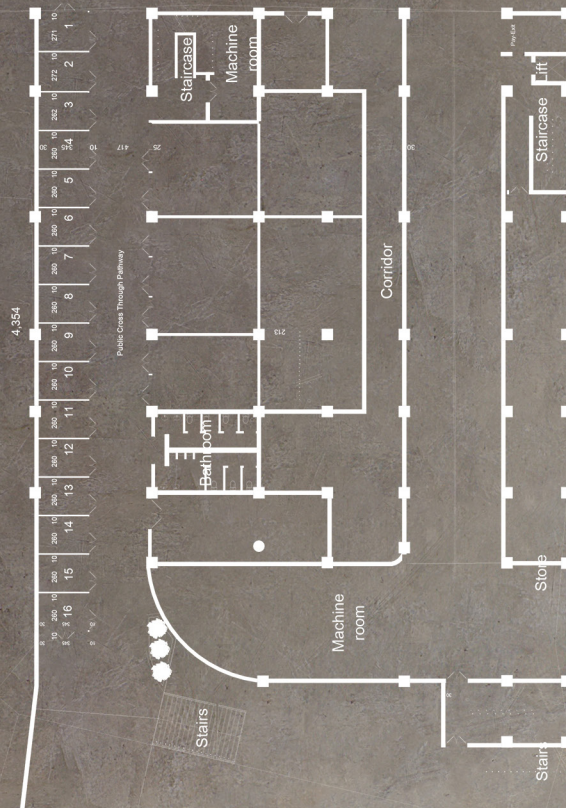




# YYUSSA PARKING

## INTERIOIRS

BetPawa Country Office is designed and implement as an executive office to host country services of BetPawa in Rwanda and represent its outstanding services competences in betting industry and providing comfortable and relaxing working environment for office users.





# BETPAWA SHOP INTERIORS

Client  
Betpawa  
Year  
2022  
Location  
M.Peace Plaza  
Status  
Built  
Category  
Shop

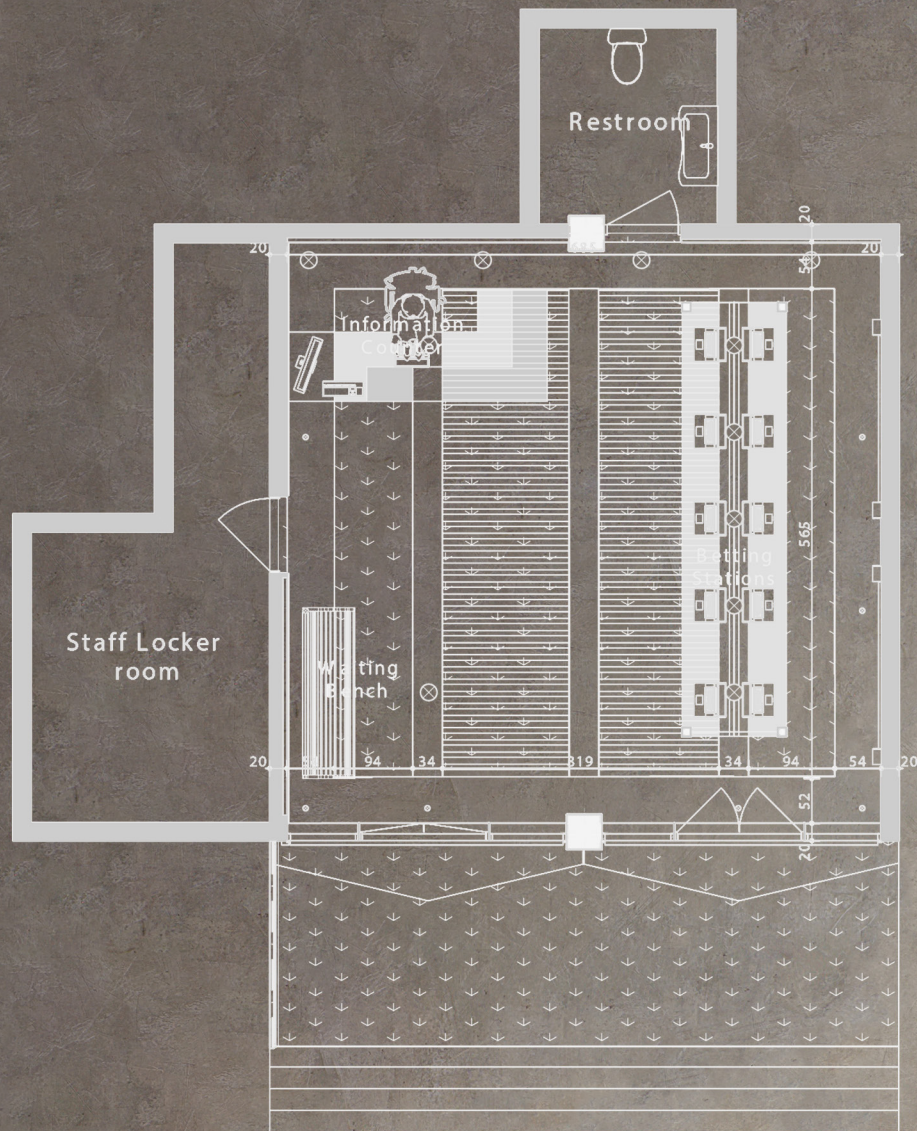




# BETPAWA

## PHYSICAL SHOP INTERIOIRS

BetPawa Physical is designed aiming to achieve an outstanding betting shop among the competitors' in the area of Gismeti, with eye-catching exterior branding design and welcoming and openness interior designing concept for variety of clients.





# ROHDE & SCHWARZ INTERIORS

Client

Rohde&Schwarz

Year

2019

Location

M.Peace Plaza

Status

Built

Category

Office





# R&S INTERIOIRS

Rohde & Schwarz Asia Country Office has been inspired by modern open working space with aspiration of team working environment and beauty of simplicity in modern interior design; also, office design had to capture to aspect of calm focused and friendly working atmosphere.





# CBM INTERIORS

Client

CBM

Year

2020

Location

Golden Plaza

Status

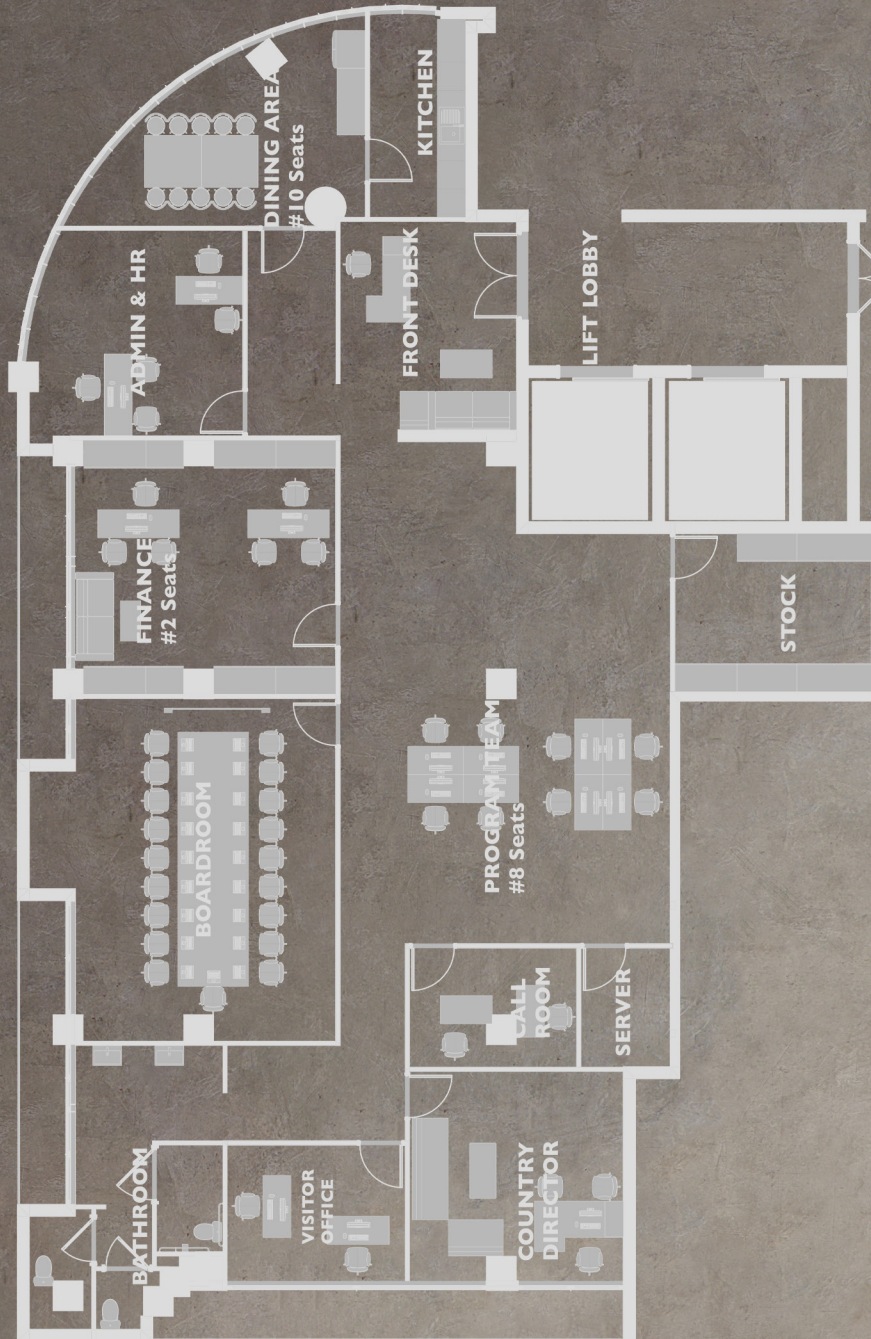
Built

Category

Office







# CBM INTERIOIRS

CBM Country Office design was dedicated to provided inclusivity working atmosphere in which all persons with disabilities enjoy their human rights and achieve their full potential, with aspiration of open and team working spirit among the office staff locally



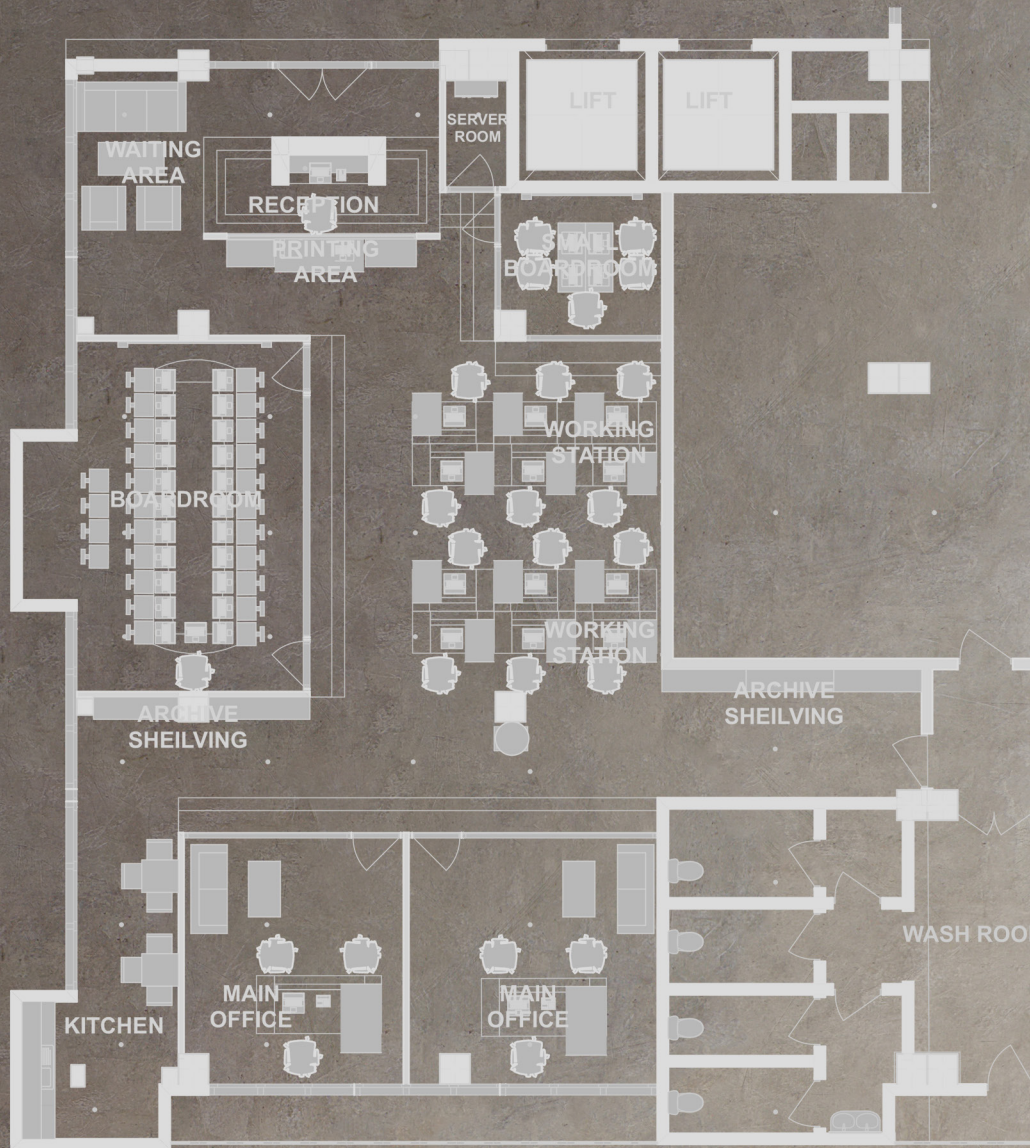


# LAND O LAKES INTERIORS

Client  
Land O Lakes  
Year  
2019  
Location  
Golden Plaza  
Status  
Design  
Category  
Office







LAND O LAKES OFFICE CONCEPT  
PLAN

## LAND O LAKES INTERIOIRS

Land O lakes Country Office was designed with purpose to accommodate as maximum number of working team on small space with access to natural lighting and fresh aeration in space.



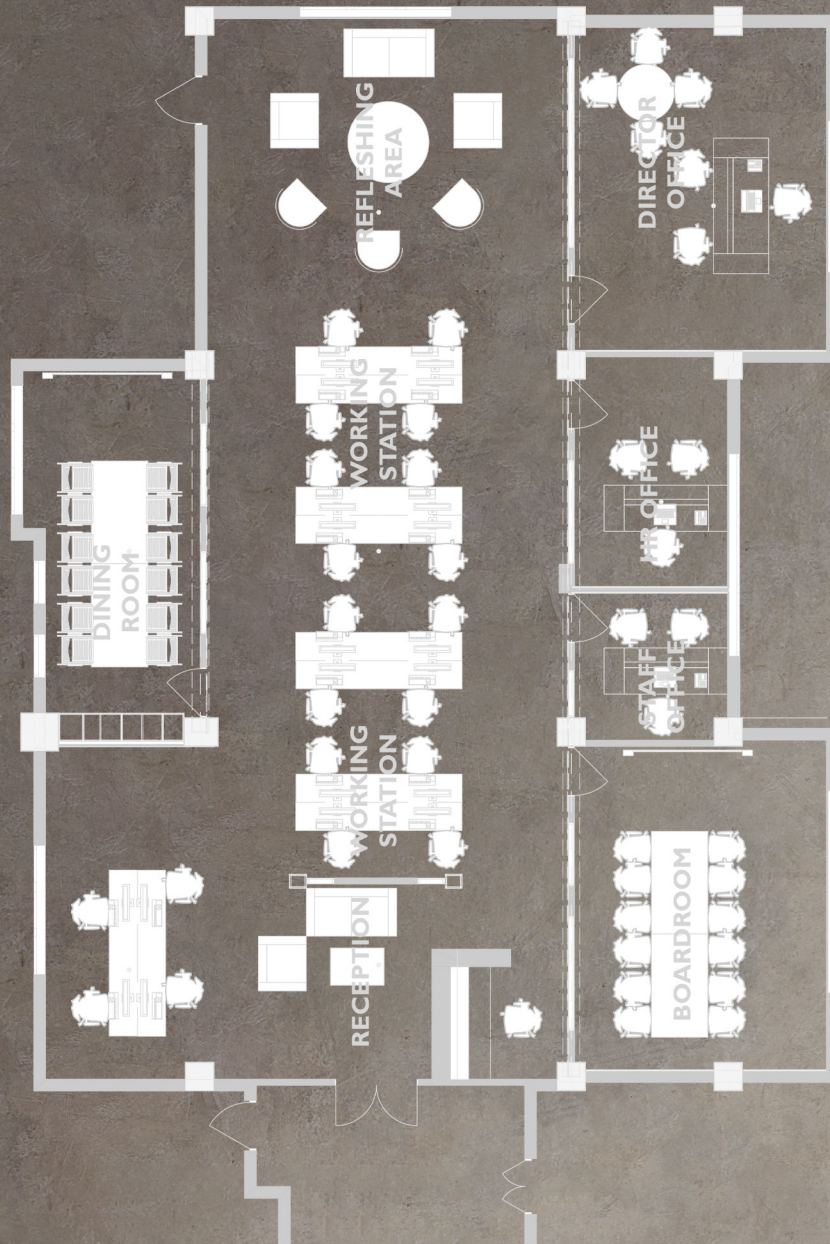


# BLUFLAMINGO INTERIORS

Client  
Bluflamingo  
Year  
2019  
Location  
Fair View  
Status  
Design  
Category  
Office







## BLUFLAMINGO INTERIOIRS

Blu Flamingo Office has been designed in accommodating theme to users and high numbered office in average space empowering team working spirit, comforting, energizing to younger workers in the team.



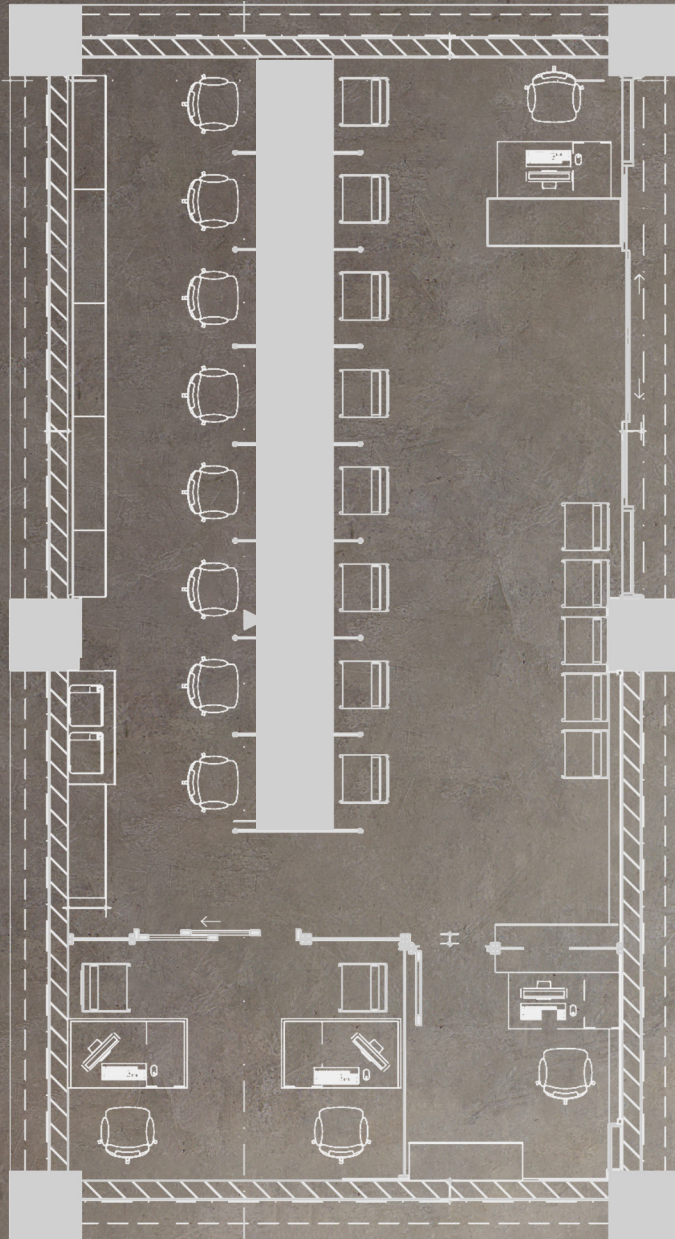


# OLDMUTUAL INTERIORS

Client  
Old Mutual  
Year  
2022  
Location  
Grand Pension  
Plaza  
Status  
Built  
Category  
Insurance







## OLD MUTUAL INTERIOIRS

Old Mutual Rwanda Main branch was built with 'openness' theme accommodating, welcoming and eye catching to break to attention of client against competitors in insurance industry nearby. It is designed with arrogance and outstanding attraction high standards to impose trust in customers.





# CARE RWANDA INTERIORS

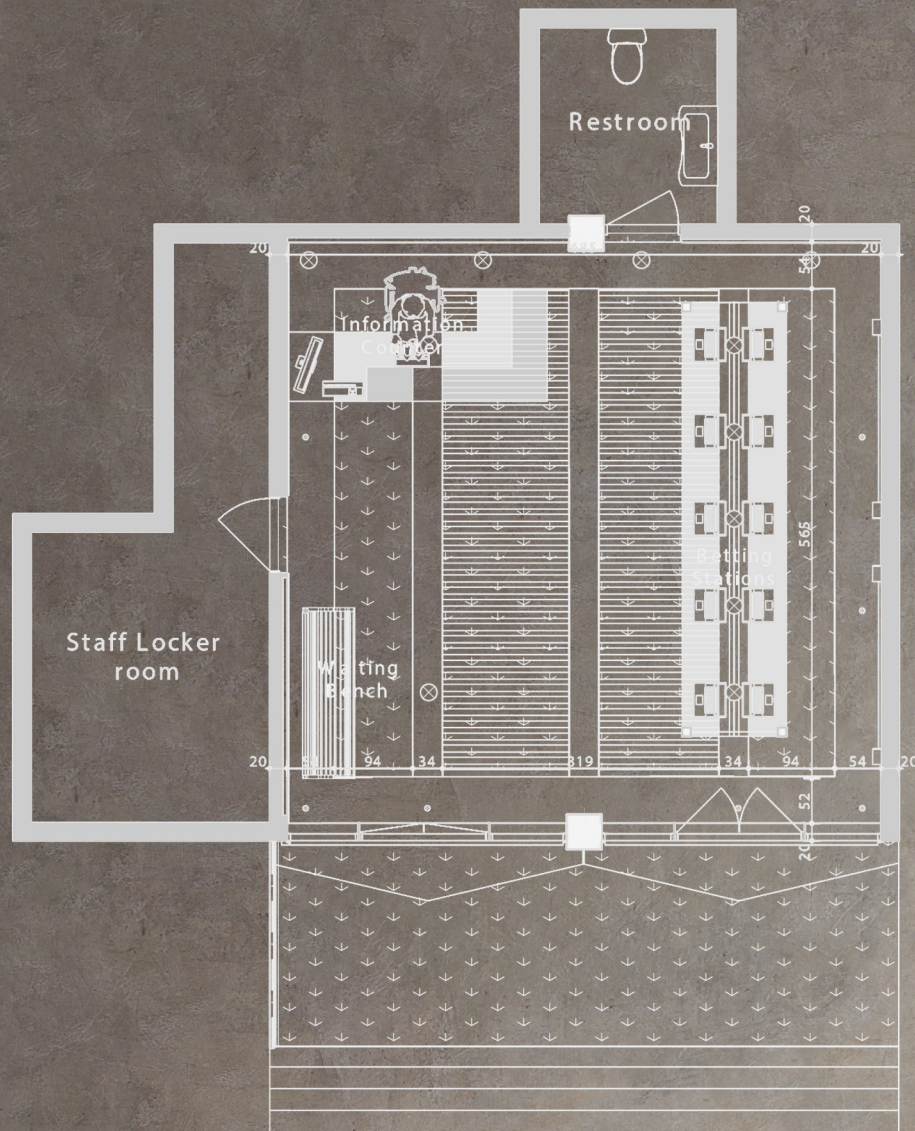
Client  
Care Rwanda  
Year  
2020  
Location  
Career center  
Status  
Built  
Category  
Office





# CARE RWANDA INTERIOIRS

Care International Rwanda Country Office has been designed to provide secure and confidentiality in each team, connectivity aspect among the staff. With the average space provided workers had access to basic facilities to make them productive, like breastfeeding, office kitchen and office private bathroom.





# HEIFER INTERIORS

Client

Heifer

Year

2019

Location

Career center

Status

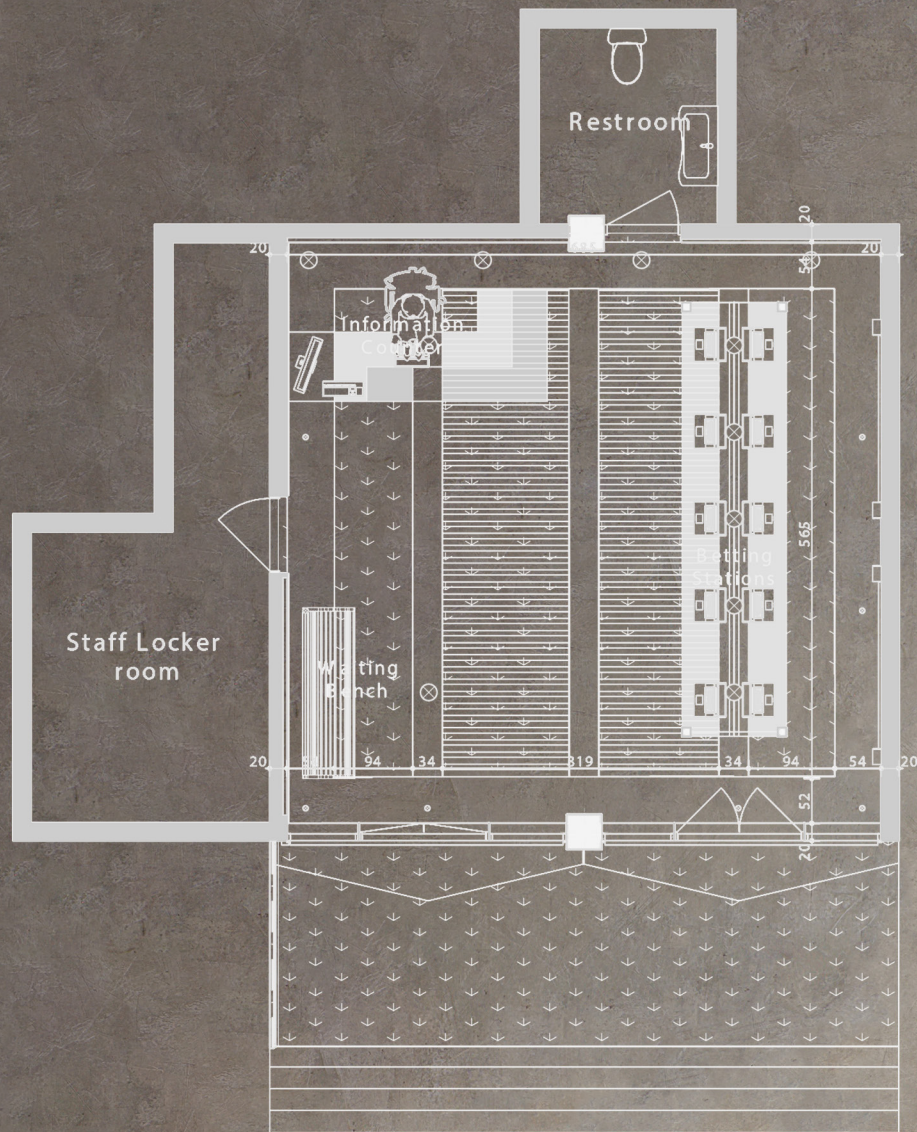
Built

Category

Office







## HEIFER INTERIOIRS

Heifer International Rwanda Country Office has been designed to provide comforting and reliable working environment around office, connectivity aspect through openness. With the average space provided high number of workers had access to basic facilities to make them productive, like tea room and office private bathroom.





# FEDEX INTERIORS

Client

FedEx

Year

2018

Location

M.Peace plaza

Status

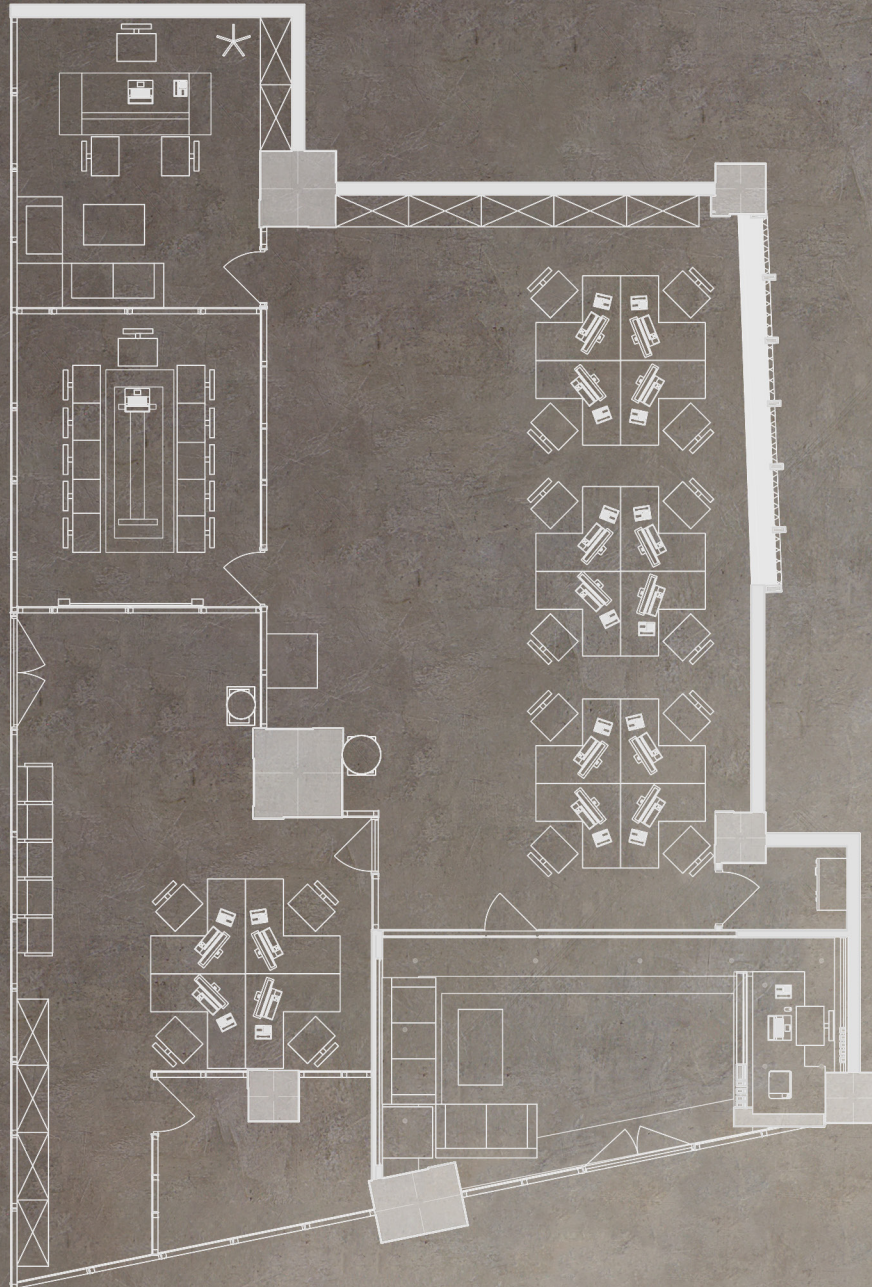
Built

Category

Office



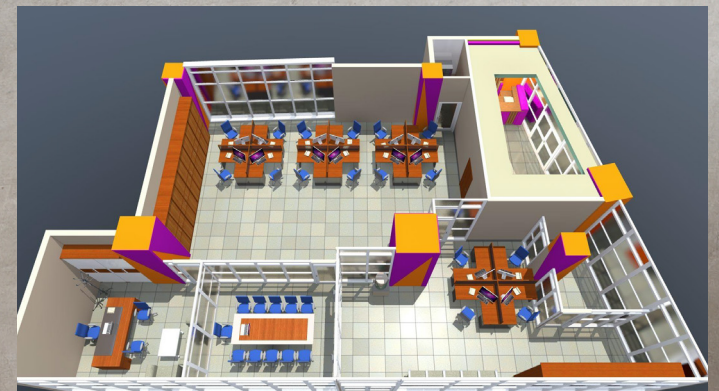




# FEDEX

## INTERIOIRS

FedEx was built to portray welcoming aspect and to break awareness of its presence around the M.Peace Plaza Building and to emphasize its outstanding profile in service providing industry from other company competitors. It is designed with arrogance and outstanding attraction high standards to impose trust in customers.





# FHI 360 INTERIORS

Client

FedEx

Year

2018

Location

M.Peace plaza

Status

Built

Category

Office

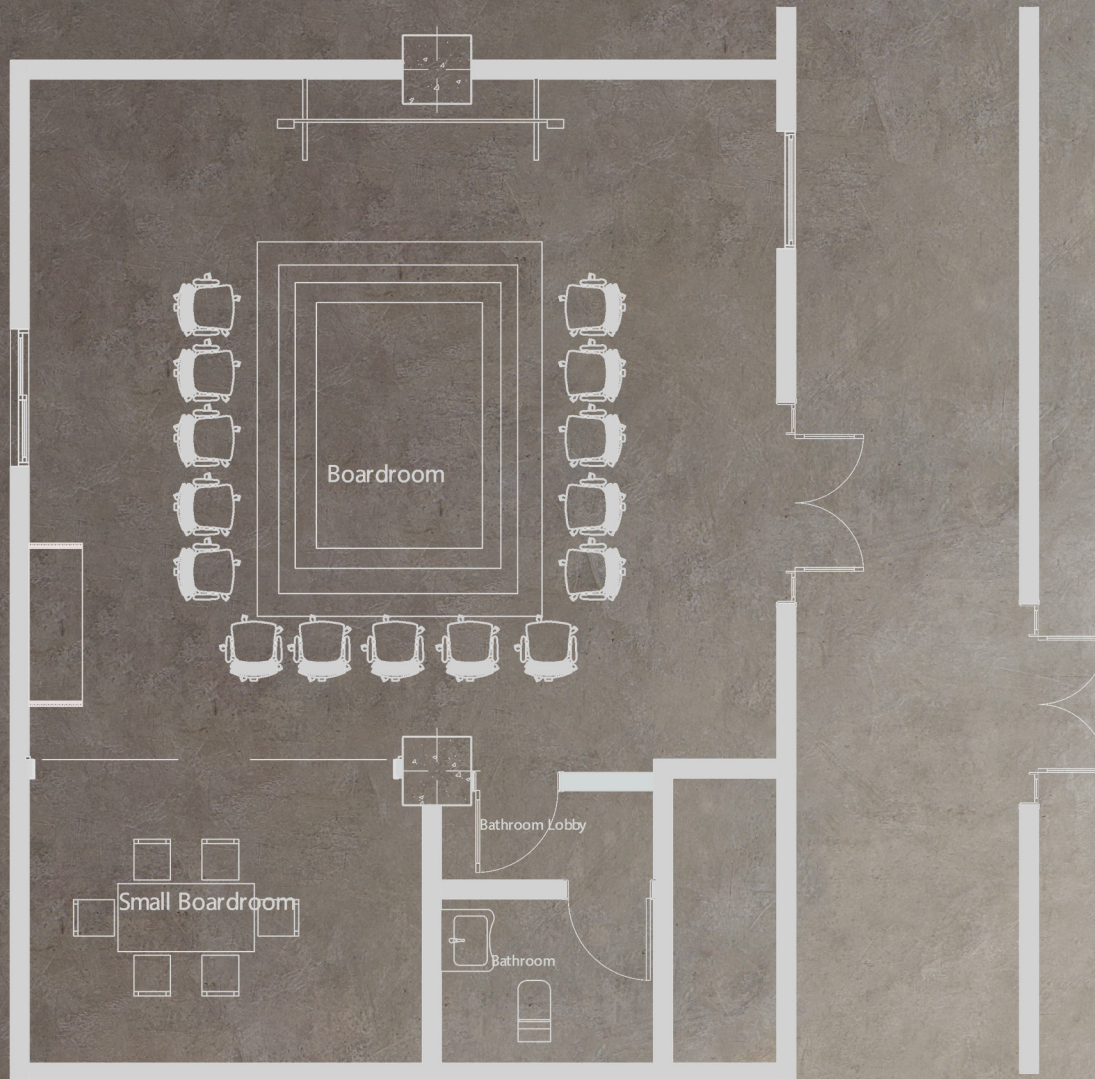




# FHI 360

## INTERIOIRS

FHI 360 Country Office has been designed to provide secure and confidentiality in each team, connectivity aspect among the staff. With the average space provided workers had access to basic facilities to make them productive, coffee room etc.





# CINDI'S HOPE INTERIORS

Client

Cindi's Hope

Year

2022

Location

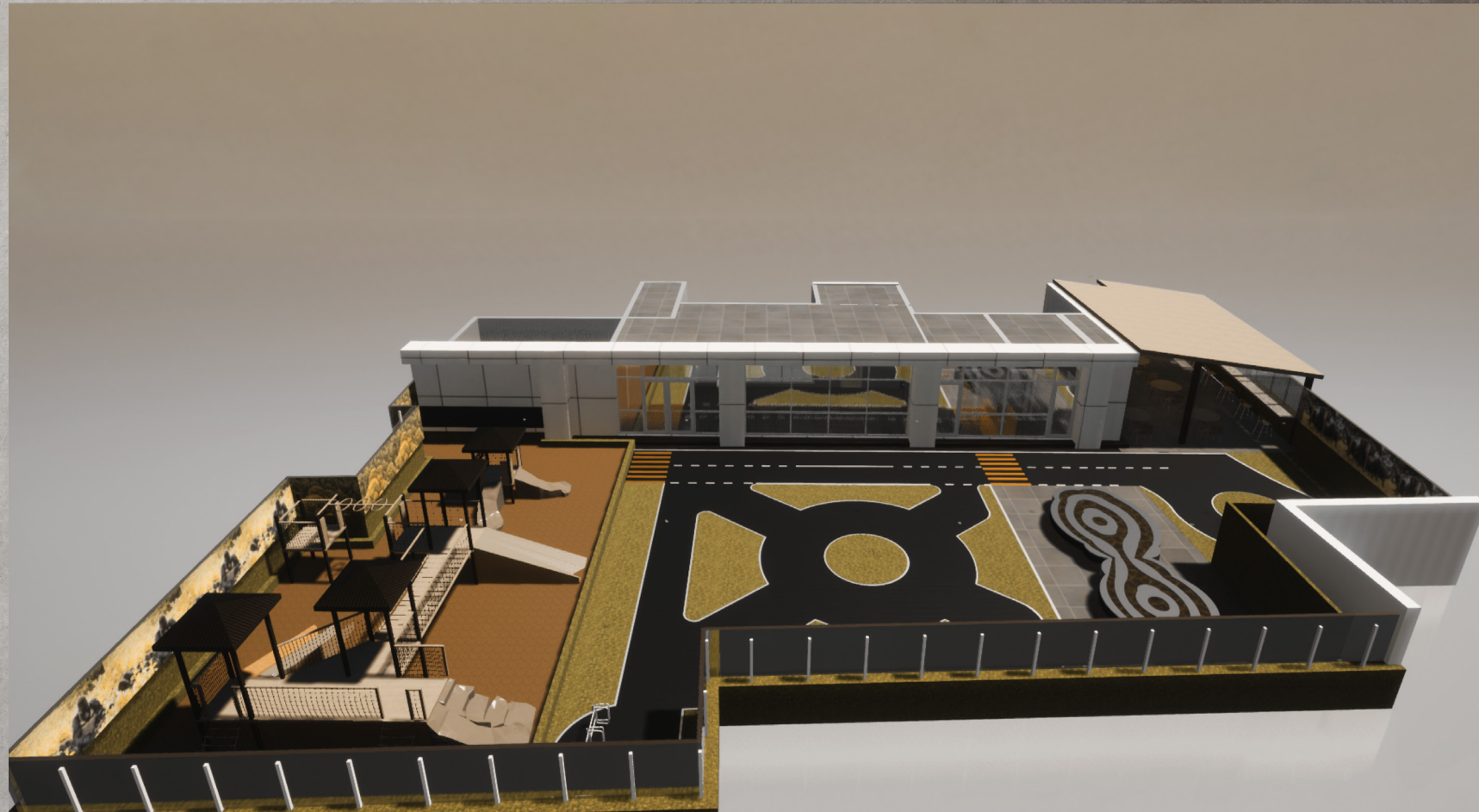
M.Peace plaza

Status

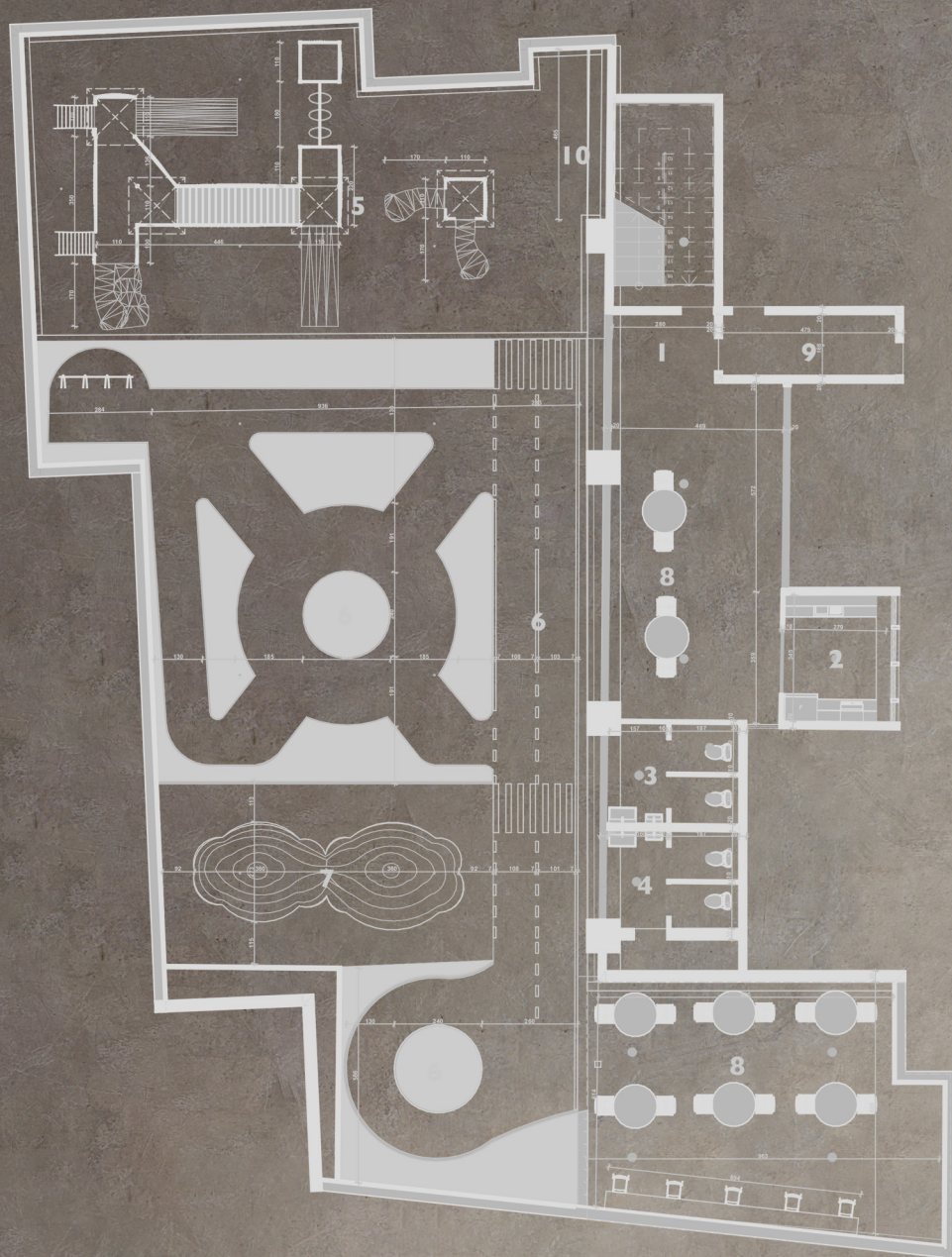
Built

Category

Landscape







# CINDI'S HOPE

## LANDSCAPE

This rooftop playing ground was a different and unique project build in Rwanda, never done such kind of project before. It was dedicated to attract kids and provide safe and relaxing playing area, by setting driveway for their bicycles, sliding on tea house after precious high point view of beauty of Kigali City and of cause sanitation facilities.





# NGANGO FARMSIDE INTERIORS

Client

FedEx

Year

2018

Location

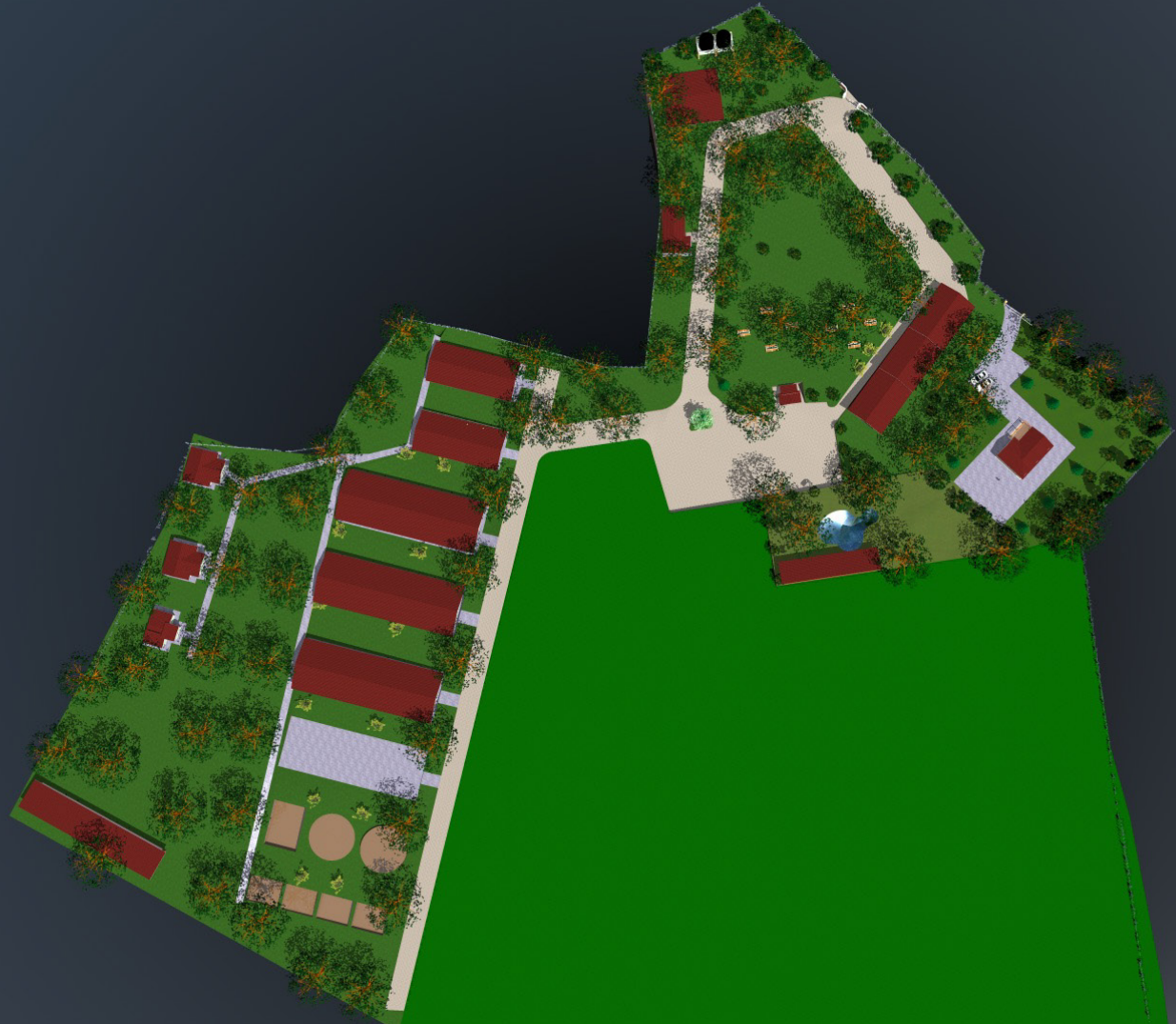
M.Peace plaza

Status

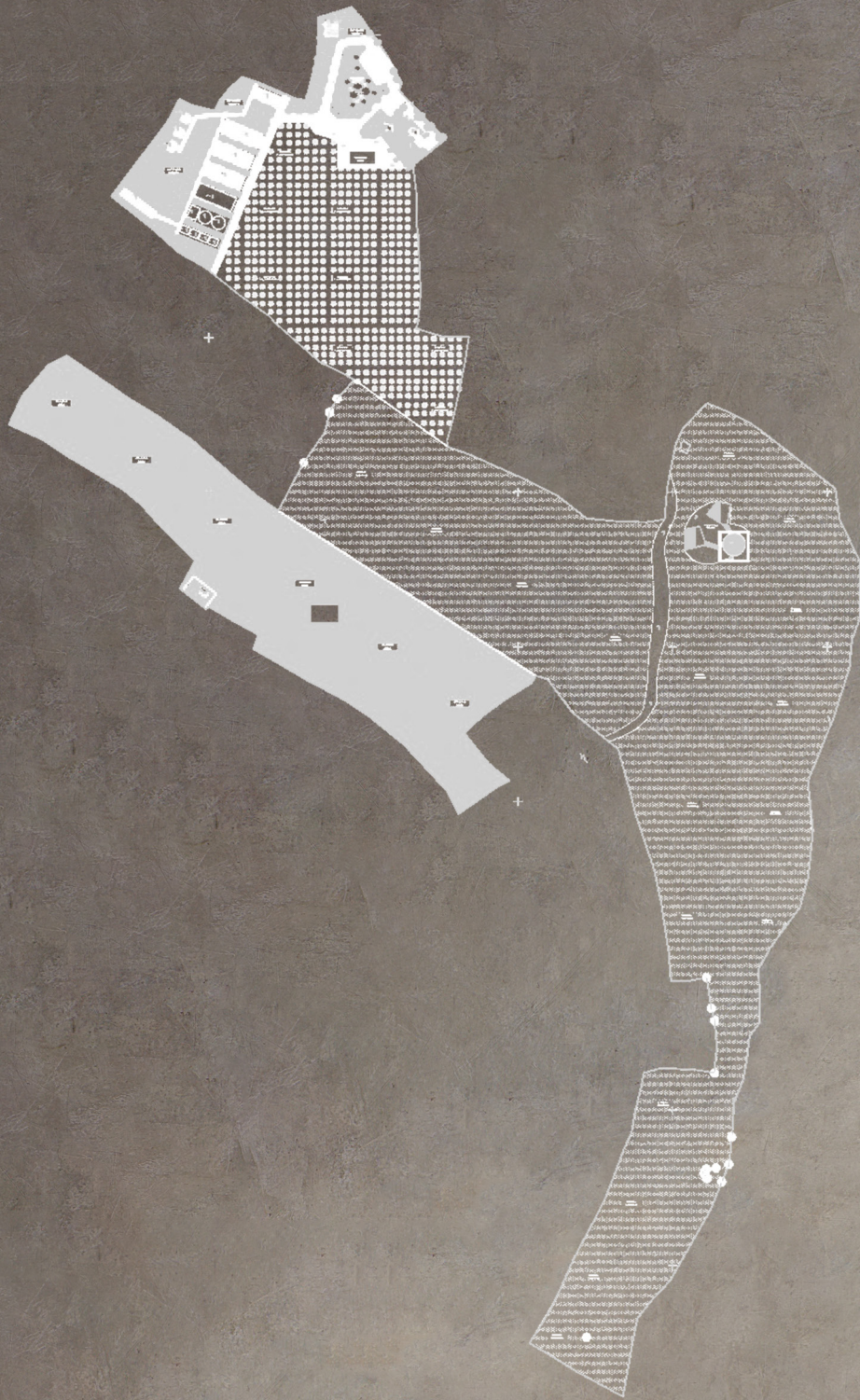
Built

Category

Office



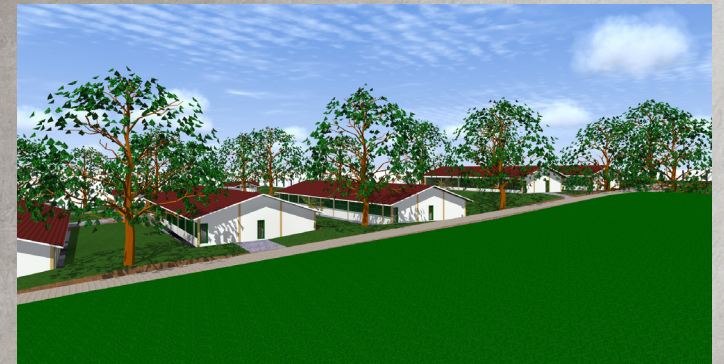




# FARMSIDE

## INTERIOIRS

Ngango Farmside was designed to provide mainly concept chart and connectivity and sector from sector sustaining system around the farm, with pig farming cattle farming providing fertilizer to banana plantation and cereals farming. It has well planned irrigation of solar panel and gravity irrigation system. the concept plan served role to combine and systematic supporting from one another.



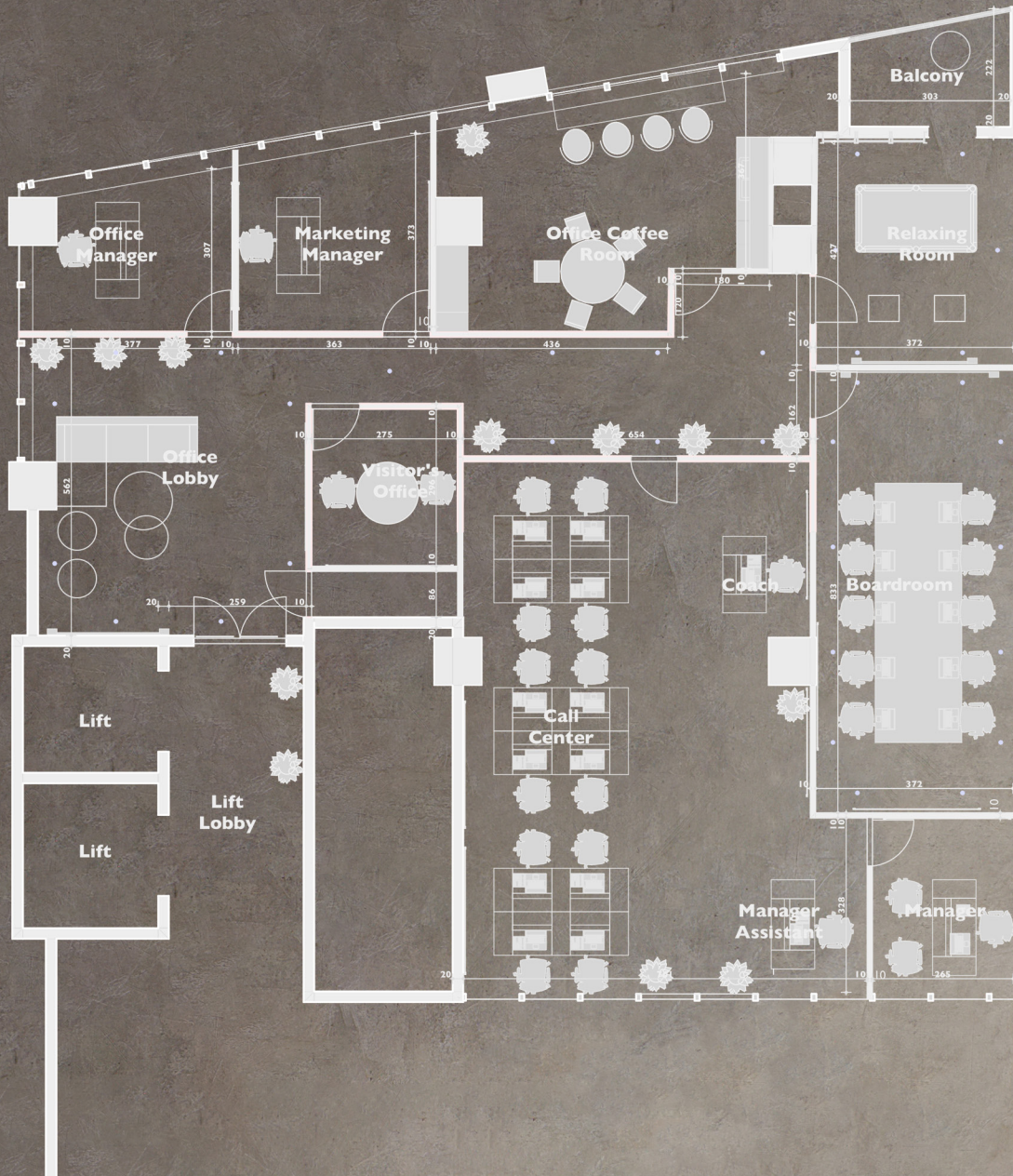


# BETPAWA INTERIORS

Client  
Betpawa  
Year  
2022  
Location  
M.Peace Plaza  
Status  
Built  
Category  
Office







# BETPAWA

## INTERIOIRS

BetPawa Country Office is designed and implement as an executive office to host country services of BetPawa in Rwanda and represent its outstanding services competences in betting industry and providing comfortable and relaxing working environment for office users.





# MCHEZO Ltd OFFICES

Client

Betpawa

Year

2022

Location

M.Peace Plaza

Status

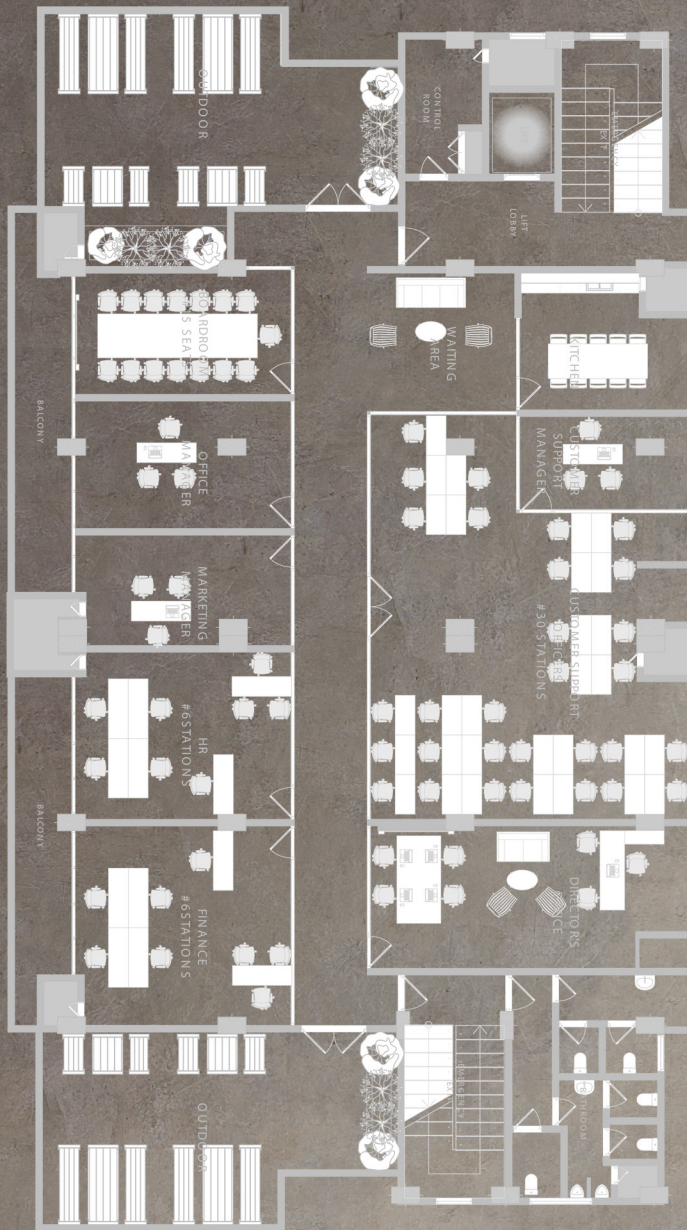
Built

Category

Office







# MCHEZO

## OFFICE INTERIORS

BetPawa Country Office is designed and implemented as an executive office to host country services of BetPawa in Rwanda and represent its outstanding services competences in betting industry and providing comfortable and relaxing working environment for office users.





# Certificates & Registration

**IRDB RWANDA** **ORG**  
Office of the Registrar General

Date of issuance: 09/01/2018  
Company Code: 107630641

**CERTIFICATE OF DOMESTIC COMPANY REGISTRATION**  
(Article 34 of the Law N° 22/0017 of 13/05/2013 governing Companies)

Registration date: 09/01/2018  
Company Name: LADRILLO LTD  
Category: Private  
Type: Limited by shares

Registered Office Address:  
Address: Kicukiro, Kicukiro, Umuyi wa Kigali, RWANDA.  
Phone number: +250788566118  
Email: potonyemurungu@gmail.com

Managing Director:  
Name: Poton NYUMURUNGA  
ID Document: NID Card No.: 11991800554806

Main Business Activity:

No.	Code	Description	Date
1	F4330	Building completion and finishing	04/01/2018

Other Business Activities:

No.	Code	Description	Date
1	F4120	Construction of buildings	04/01/2018
2	F4313	Demolition	04/01/2018
3	F4312	Site preparation	04/01/2018
4	F4122	Plumbing, heat and air conditioning installation	04/01/2018
5	F4390	Other specialised construction activities	04/01/2018
6	S9609	Other personal service activities n.e.c.	04/01/2018

Serial No: 430789  
Check the validity of the certificate by visiting the link <http://www.rdb.rw/> using the serial number.

**Statutory Tax filing due dates**

Tax type	Filing due date
1 Profit Income tax	January 1st - 31st March of the following year of registration
2 Quarterly Income tax	First quarter (April 1st - 30th June), second quarter (July 1st - 30th Sept) Third quarter (October 1st - 31st December)
3 VAT Monthly	1st - 15th of the following month after the VAT monthly tax period
4 VAT Quarterly	1st - 15th of the following month after the VAT quarterly tax period
5 PAYE (Pay As You Earn)	1st - 15th of the following month after the PAYE monthly tax period
6 PAYE Quarterly	1st - 15th of the following month after the PAYE quarterly tax period

**Note:**

- Once you are registered for business, Profit Income tax and Quarterly Income Tax Accounts are automatically generated and you have obligation to make their declaration and payments where applicable in their respective due dates.
- Other types of taxes mentioned in the table above and others not mentioned are being registered for during the course of business as they become mandatory except from VAT which is either mandatory when you reach on an annual turnover of 20M Fw or 5M Fw million on quarterly basis, then Voluntary VAT registration when your annual turnover is below 50M Fw.
- The first Quarterly Income Prepayment is made after the first profit Income Tax has been declared.

**Documents to be delivered to the Registrar General**  
Every company has to file with the Registrar General the required documents in the form and time, as provided for by the Law N° 22/0017 of 13/05/2013 governing Companies.

**FedEx**  
Express  
Pan Africa Express Transport Limited  
Kigali, Rwanda.

TIN: 100712823  
Tel: +250 252 574506  
Makuru Peace Plaza  
Plot 12003, Nyarugenge District  
Kigali, Rwanda.  
Email: info@fedex.rw

**CERTIFICATE OF GOOD COMPLETION**

We hereby certify that LADRILLO Ltd has successfully completed contracted FedEx Rwanda interior design offices at Nyarugenge District, Kigali City, M PEACE Plaza Building.

> Project Period: October, 2018, November 2018  
> Assigned obligations:

- o Interior designing of offices
- o Execution of Gypsum partitioning works
- o Execution of Aluminum partitioning works
- o Interior general painting of offices

Therefore, we are gladly recommended LADRILLO Ltd has professionalism and other qualities required in Interior design services.

Country director, Rwanda

## HAND-OVER NOTE

### HEIFER INTERNATIONAL OFFICE PARTITION AT GOLDEN PLAZA

This is to acknowledge that the following works LADRILLO Ltd assigned on, relating to HEIFER INTERNATIONAL OFFICE PARTITION are well completed as contracted and ready to be submitted to Heifer International administration after works done checking by both parties together i.e. Heifer International and Ladrillo Ltd.

Following assigned works done ready to handle over to Heifer Administration;

- > Office partition with gypsum materials and its accessories
- > Glass and Aluminum frames front partitions with its accessories
- > Ceiling installation with gypsum board and wooden materials for corridors, Country Director Office as it was designed in the contract annexes attached
- > General Painting of whole office with white color paint.
- > Kitchen counter with MDF boards and top granite with all accessories and water supply system installation.
- > Main entrance door manufacturing and installation with laminated glass and aluminum framing.
- > Electrical system material supply and installation around the office
- > Reception back wall finishing with MDF board and its lighting with snake light.
- > Bathroom of main office materials supply and installation.

Listed works delivered are checked by:

LADRILLO LTD  
24 May 2019

HEIFER INTERNATIONAL

24 May 2019  
HEIFER INTERNATIONAL RWANDA  
P.O. Box 4782, KIGALI  
Tel: +250 252150911  
E-mail: info@heiferinternational.rw





INGOBYI ACTIVITY  
GOLDEN PLAZA, 3<sup>rd</sup> Floor  
KG 546 Street I  
P.O. Box 6639-Kigali  
Tel. + (250) 738795924  
Kacyiru, Kigali  
www.intrahealth.org

Ref: N°034/IntraHealth/Rw/FY 19

TO WHOM IT MAY CONCERN

#### CERTIFICATE OF GOOD COMPLETION

We, IntraHealth International hereby certify that LADRILLO Ltd has Successfully completed contracted works of office partitioning using Gypsum, Aluminium, MDF and glasses. The works was completed within the agreed period.



Samson M. Radeny, Ph.D.,  
Chief of Party  
Ingooby Activity  
IntraHealth International

## LAND O' LAKES™ INTERNATIONAL DEVELOPMENT

### Certificate of Service

LADRILLO Ltd

March 21, 2019

Land O'Lakes International Development  
KG546Ave1-Kigali, Rwanda

Land O'Lakes International Development is implementing the USAID funded Cooperative Development Program-4 (CD4) in Rwanda. This project is strengthening cooperatives in and operates a representative office located in Kigali, Rwanda for the purpose of implementing activities.

LADRILLO Ltd has successfully completed the work of office partitioning for our office in Kacyiru, Kigali in February 2019; they have used quality partitioning material and completed work on time.

This serves to certify our satisfaction for their service.

Sincerely,

Willy Nyirigira

Program Manager, CDP  
+250788386097

willynyirigira@landolakes.org



RHODE & SCHWARZ



Rhodes & Schwarz Asia Pte Ltd  
17th Floor, Tower A, 165 Beach Road, #17-01, Kiyoh, Kiyoh, Kiyoh

To whom it may concern

Contact:  
Rhode & Schwarz Asia Pte Ltd  
Phone: +65 6336 8888  
Fax: +65 6336 8889  
rhodes@rhodes.com.sg  
rhodes.com.sg

Brussels, January 21, 2021

#### Reference letter

Dear Ladies and Gentlemen,

Ladrillo Interior & Landscape design provided us a total office reconstruction and equipped our new office to our full satisfaction.

We hereby confirm the following characteristics and work ethics of Ladrillo:

- Very reliable and trustworthy
- Very focused on customer satisfaction, even if it requires extra work
- Handles issues and improvements quickly and in-depth/sound
- Detail oriented
- Uses the extra mile to achieve customer satisfaction
- Has good and pragmatic ideas and quick understanding of your needs
- Proactively looks for good solutions
- Competitive prices

This letter should serve as a reference for other customers and new projects. You are mostly welcome to visit our office and to see above by yourself.

Best regards,  
Rhodes & Schwarz Asia Pte Ltd  
Rhodes Branch

Hans Mathias Börs  
General Manager

Philippe Amcke  
Product Owner Research & Development





